

## **Accessing Job Opportunities in the Natural Gas Industry**



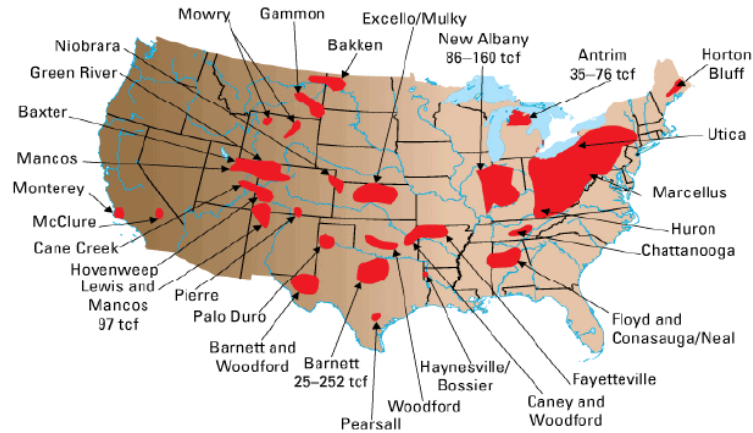
Andy Fagan, Cornell Cooperative Extension Tioga County  
Sheri McCall, Tioga Employment Center  
Hubbard Auditorium, May 26, 2010

## **Accessing Job Opportunities in the Natural Gas Industry**



Cornell University  
Cooperative Extension

## Major Natural Gas Shale Basins



Cornell University  
Cooperative Extension

## Current Drilling Activity

- Active drilling in Marcellus Shale in PA
- **Well information is posted on DEC's website**  
<http://www.dec.ny.gov/energy/46288.html>
- Active drilling in other rock formations in NY
- Active vertical wells in Marcellus formation in NY
- Permits for horizontal Marcellus drilling in NY  
– on hold during DEC's SGEIS review

## Three Phases of Natural Gas Development

### Development Phase (Short Lived/Labor Intensive)

- Well-pad and Access Road Construction
- Local collection pipeline Construction
- Drilling of the Well
- Fracturing of the Well
- Reclaiming some Disturbance

### Production Phase (Long lived/Small & Steady Labor Force)

- Trucking Water and condensate from Well Site
- Monitoring Production
- Occasional Well Work-Overs (partially re-drill/re-frac)

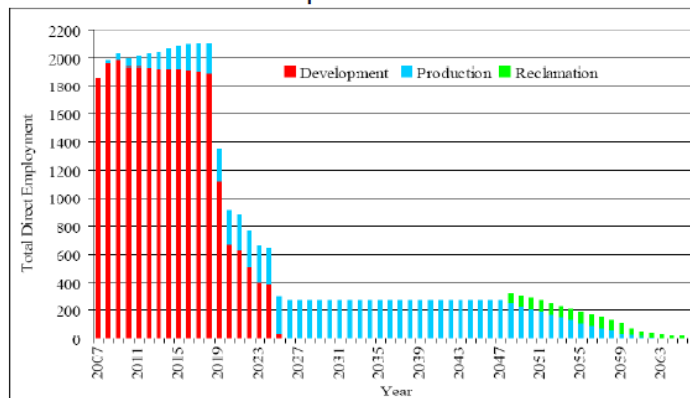
### Reclamation Phase

- Dismantle and Reclaim well-sites



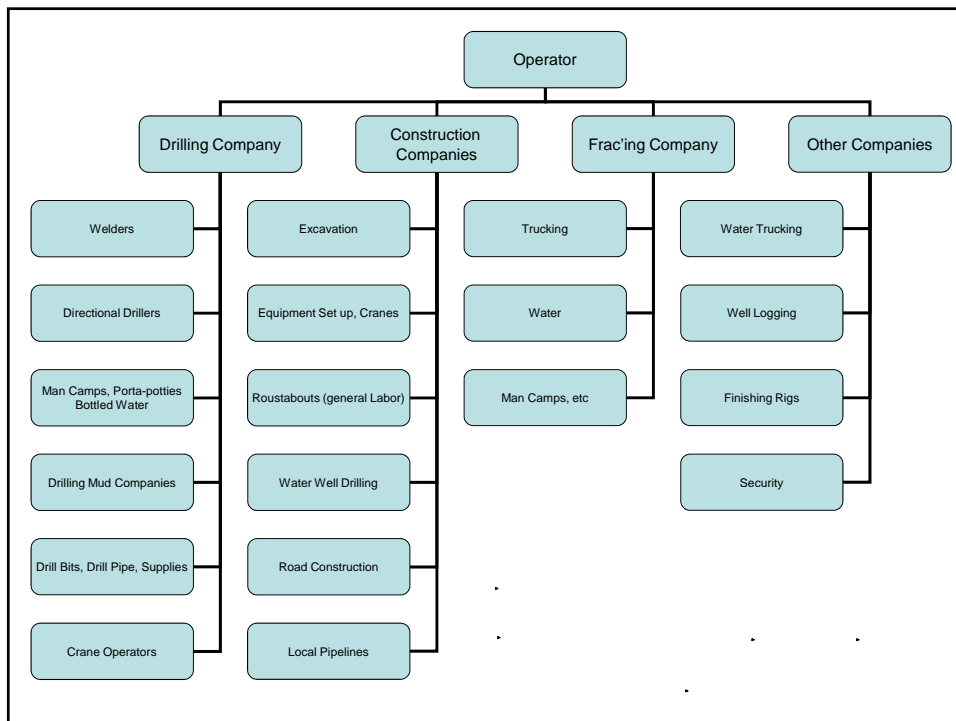
Cornell University  
Cooperative Extension

### Drilling Phase is Short Lived, Very Intensive, and Unpredictable



# The Number of Rigs Drive Everything

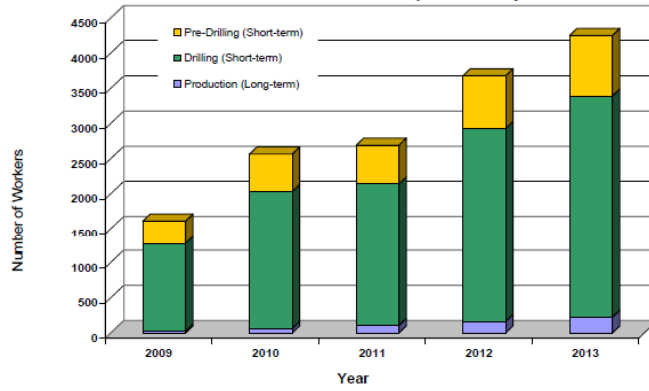
Number of Rigs = Amount of Development = Size of Workforce = Impact





## Northern PA Workforce Projections

"Likely" Scenario Northern Tier WIB Region  
Marcellus Shale Workforce Requirements By Phase

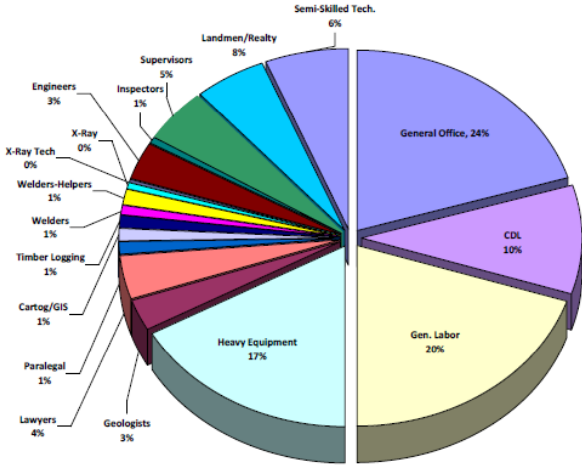


## The Two Big Workforce Questions:

- How many workers will be needed?
- How many workers will be available?
- How many workers will be trained?
- How many workers will be employed?
- How many workers will be employed in the Northern Tier?
- How many workers will be employed in the Western Tier?
- How many workers will be employed in the Eastern Tier?
- How many workers will be employed in the Southern Tier?
- How many workers will be employed in the Central Tier?
- How many workers will be employed in the Northern Tier?
- How many workers will be employed in the Western Tier?
- How many workers will be employed in the Eastern Tier?
- How many workers will be employed in the Southern Tier?
- How many workers will be employed in the Central Tier?



# Accessing Job Opportunities in the Natural Gas Industry



What specific jobs are required?

## Accessing Job Opportunities in the Natural Gas Industry

Additional jobs are created in the service industries that support the natural gas industry –

## Natural Gas Resource Websites

[American Petroleum Institute](#) – [www.api.org](#)

[U.S. Energy Information Administration](#) – [www.eia.doe.gov](#)

[U.S. Geological Survey](#) – [www.usgs.gov](#)

[U.S. Bureau of Land Management](#) – [www.blm.gov](#)

[U.S. Environmental Protection Agency](#) – [www.epa.gov](#)

Company websites – [www.naturalgas.org](#)



## Where to find job search assistance/information

### Broome-Tioga Workforce NY

2 locations:

Tioga Employment Center  
Rt 38, Owego NY  
607-687-8500



Broome Workforce NY  
171 Front St, Binghamton NY  
607-778-2136

### BROOME- TIOGA WORKFORCE

Website:

[www.broometiogaworks.com](http://www.broometiogaworks.com)

## JOB SEARCH ENGINES

- All NYS Dept of Labor job listings migrate to a public site:

[www.americasjobexchange.com/ny](http://www.americasjobexchange.com/ny)

(NY numbers vs. JE numbers)

For Pennsylvania- jobs posted on:

[www.cwds.state.pa.us](http://www.cwds.state.pa.us)

## WHO IS DOING THE HIRING?

- Most jobs associated with gas industry are being hired through sub-contractors, not the drilling companies directly.
- Employment agencies in the area are the main subcontractors for the drilling companies
- Employment agencies- will hire, put through training, and after a period of time, employee may be hired permanently by drilling company. Many are direct hire: recruiting and screening done by employment agencies but then direct hire to company

## EMPLOYMENT AGENCIES

- Express Pros (based in Scranton)  
<https://scrantonpa.expresspros.com> or [www.expresspros.com](http://www.expresspros.com)  
[Lois.Hugo@expresspros.com](mailto:Lois.Hugo@expresspros.com)  
570-963-1000
- Manpower- Vestal location  
4104 Old Vestal Rd, Suite 106  
Vestal, NY  
607-729- 4604
- SOS Staffing Services  
940 Chemung St, Ste C  
Horseheads, NY  
607-739-2305  
[www.sosstaffing.com](http://www.sosstaffing.com)

## Jobs listed with agencies

- Floor Hands
- Mechanics
- Supervisors
- Field Technicians
- Administrative Assistants
- Title Search and Scanning
- CDL Drivers
- Land Technicians
- Equipment Operators
- Welders
- Pipe Fitters
- Installers
- Machine Operators/CNC
- General Labor
- Dispatchers

## GENERAL REQUIREMENTS

- High School Diploma or GED
- Able to pass random and frequent drug screenings
- Background checks and reference checks
- No felony convictions within 7-10 years
- No alcohol related convictions within last 3-7 years
- Physically fit

## JOB OUTLOOK

Per Pennsylvania Dept of Labor

Welding

Service

Measurement Techs

Heavy Equipment

CDLA and CDLB

Inspection

Compression Mechanics

Pipe Fitters

Shop Hands

## TRAINING OPPORTUNITIES

- Broome-Tioga BOCES 607-763-3616  
courses include:
  - downhand welding
  - forklift certification (rough terrain)
- GST BOCES 607-739-7905  
courses include:
  - heavy equipment operation (includes CDL)
- Broome Community College
- Corning Community College

## Preparing for job fairs / interviews

- Application
  - have a generic application filled out – dates, spelling, references
- Resume- for faxing, emailing, uploading
- Paper, pen, 2 forms of ID
- For driving jobs: copies of Motor Vehicle Report; license, endorsements, DOT medical card
- Only apply to jobs qualified for/ within your limitations

## Accessing Job Opportunities in the Natural Gas Industry